



*Beyond Medicine,
Into the Heart of Care*

2016-2017 Impact Report



In 2017, CDTC earned national recognition as a Level 3 Patient Centered Medical Home from the National Committee for Quality Assurance.

36.2%

Children with special needs have access to a medical home in Florida

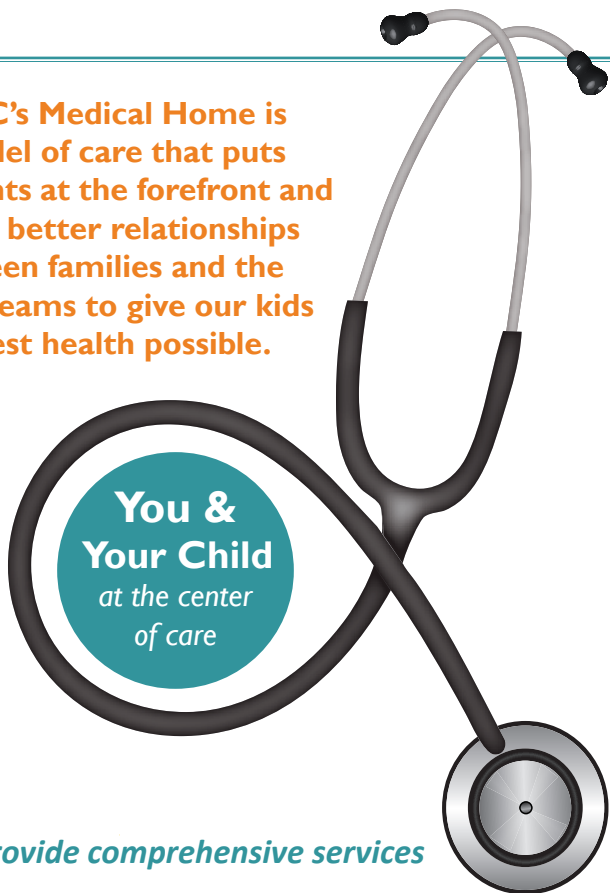
CDTC's Medical Home is a model of care that puts patients at the forefront and builds better relationships between families and the care teams to give our kids the best health possible.

Primary Care Medical Clinic

*with devoted Physicians
Serving 2,526 Children & Young Adults*

Dental Clinic

*on-site & a part of your healthcare team
Serving 605 Children*



Support from teams provide comprehensive services

Comprehensive Family AIDS Program (CFAP)

Serving 3,353 Women, Infants, Children & Youth infected and affected by HIV

Targeted Outreach for Pregnant Women Act (TOPWA)

Serving 575 Clients

Extraordinary Children Healthy Outcomes (ECHO)

Serving 690 Children

Research

Serving 175 Clients

Lift a Child to Health (LCH)

Serving 240 Children

Early Steps at CDTC

Serving 6,617 Children

Transitioning Adolescents Forward into Tomorrow (TAFT)

Serving 121 Teens & Young Adults

More than 11,900

Infants,
Children,
Youth &
Women
in Our
Care

CDTC's LCH & ECHO programs provide care coordination, an essential component of the medical home.

Lift a Child to Health

LCH

Medical management in partnership with families to optimize health

Extraordinary Children
Healing Outcomes

ECHO

Education & assistance to make appropriate medical care decisions



Maintaining good health to prevent unnecessary trips to the emergency room

As **HIV+** clients live longer, **CFAP** now treats 3 generations of a family.



Outreach & care ensures a **0%** transmission rate from mother to newborn!

1 OF 12 TEST & TREAT SITES
IN BROWARD

TOPWA ensures under-served women have access to prenatal care



CDTC RESEARCH

1 OF 2 NON-UNIVERSITY RESEARCH SITES FUNDED BY THE NIH

TAFT & CDTC Teens focus efforts on three goals along the path to young adulthood...



Kids with special healthcare needs are

2x

*as likely to have
unmet dental
problems*

**CDTC's
Dental
Clinic**



combines convenience, treatment, patience & care

**early
steps**
at cdtc

Early Steps at CDTC is the lead agency for early intervention services for infants and toddlers in Broward County.

**Age
0-3**



No Income
Criteria



3 satellite clinics now open in
Hollywood, Weston & Coral Springs



CDTC kids live each day dealing with disabilities, challenges and health issues. **Every month one of our programs chooses a special child who's strength, courage, determination and joy makes them our CDTC Hero!** Follow their inspirational stories on Facebook or at www.childrensdiagnostic.org.



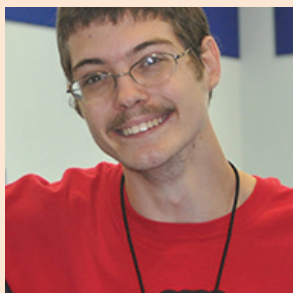
Kasie



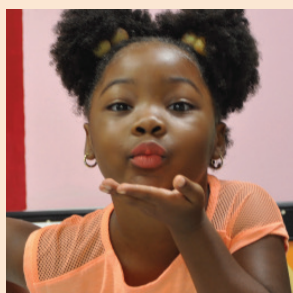
Ricardo



Nick



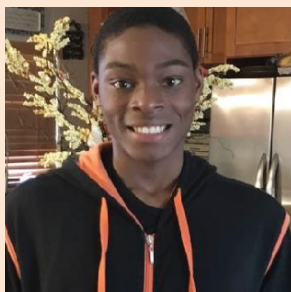
Tony



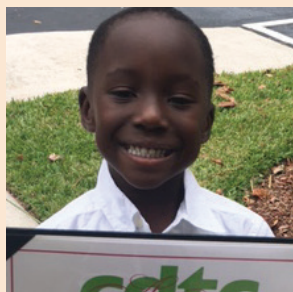
Blessin



Sebastian



Richard



Tyler



Pierce



Ebony



Caitlin

Meet Our Hero

Leia

My daughter Leia was born with progressive hearing loss and showed severe developmental and physical delays. She was completely immobile unable to even roll from back to tummy and was so hypersensitive to touch that she wouldn't let us hold her hands.



Imagine not being able to hold your daughter's hands without her pulling away.

With the help of her team of therapists through Early Steps she is improving and, with assistance from her family, is taking her first steps towards walking. She is humming to every tune of every song as though her hearing is unaffected, and most importantly lets me and her dad touch her hands without getting upset.

Leia still has a long way to go with so much to learn, but what is amazing is that she has a great team of therapists and specialists working with her throughout this journey.

Our involvement with Early Steps has taught my family a deeper understanding of Leia's needs and how best to care for her at home. It has also provided us a better sense of who Leia is as a person.

We have seen throughout her journey such a love and excitement towards experiencing new things and achieving various milestones. We are very grateful for the opportunity that Early Steps has provided us in providing the best treatment for our daughter while also helping us bond to her in a way we never knew we could.

- Kimberly Garcia, Leia's Mom

Our Mission in Action

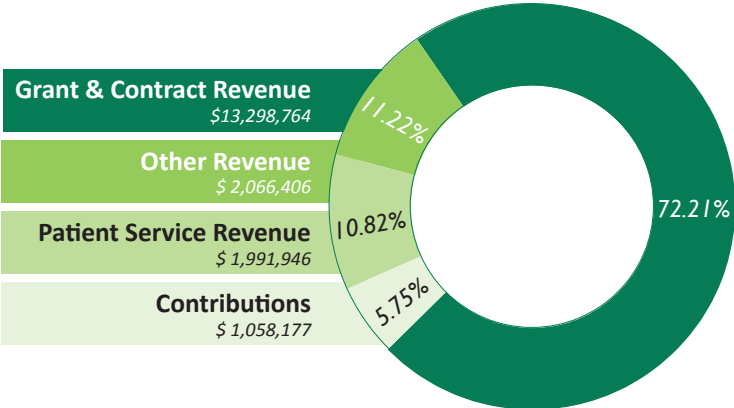
Thank you to the **cdtc Sunflowers** who tirelessly raise funds for our programs and coordinate projects like our Welcome Bags, Children's Library, Valentine's Day Jewelry Giveaway, Back to School, Annual Handbag Giveaway, Holiday Gift Wrap and Cookie Exchange and the Bare Necessities Food Pantry.



Thank you to the **CDTC Transformers** who transform the lives of our children by championing CDTC in

the community and raising awareness and support through out the year.

How We're Funded*



Major Funding Provided By

Early Steps at CDTC
Individuals with Disabilities Act (IDEA) Part C; Florida Department of Health/Children's Medical Services

CFAP
HRSA, Ryan White (Part D); Florida Department of Health/Children's Medical Services; Health Foundation of South Florida; The SMART Ride

Research
National Institutes of Health

Primary Care Medical Clinic
CDTC Transformers; cdtc Sunflowers

ECHO
Broward County Children Services Administration Section, Community Partnerships Division

LCH
United Way of Broward County

TAFT
Taft Foundation

Dental Home
The Millsaps Family Foundation; The Carnival Foundation; CBS Corporation

TOPWA
Broward County Health Department

How We Use Our Funds*

96.5¢ of every dollar

you give goes directly to **Programs & Supporting Services** for our children and families!

3.5%
administrative cost



**Source: CDTC FY '17 Financial Audit*

Executive Team*

Ana E. Calderon Randazzo, Ph.D.
Executive Director



Melissa Bottge White, M.B.A.
Assistant Administrator



Nadia Graham
Director, Comprehensive Family AIDS Program



Amy Inman
Manager, Research, Contracts & Grants

Ellie Schrot
Director, Early Steps Program



Jessica Vones
Director of Development



Stewart Wechsler, M.Acc, CPA
Director of Finance & Operations



*as of 11/08/2017

Board of Directors*

Juliette Lippman
Board Chair
Birnbaum Lippman & Gregoire, PLLC

Mole Telfer
Vice Chair
MHG Insurance Brokers

Jane Bolin
Secretary
PeytonBolin, PL

Alan Goldsmith
Treasurer
Broward Health

Bill Barrett
Luxury Home Consultants

Sandra Birdsong
Guaranteed Rate

Beverly Capasso
Broward Health

Sabrina Farmer
JYS Consulting

Samuel Hammer
S K Hammer and Associates, PA

Audrey Millsaps
Community Advocate

Lisa Morley
Maritime Professional Training

Dan Overbey
Atlantic Capital Advisors

Maria Pierson
Pierson Grant Public Relations

Colonel Alvin Pollock (Ret.)

Ira Vernon
Concrete Reinforcing Products

Christian Zanartu
Brown & Brown Insurance

Council of Advocates

Judy Ambrose
Carolyn Greenlaw
Jen Klaassens
Sheriff Al Lamberti (Ret.)

Virginia (Ginny) Miller
Dorothy Orr, Ed.D.
Nancy Platt
Commissioner Nan Rich

William Spencer
Lorraine Thomas
Glen Weinzimer

*as of 11/08/2017

cdtc

Children's Diagnostic & Treatment Center

1401 South Federal Highway, Fort Lauderdale, FL 33316

954.728.8080 • www.childrensdiagnostic.org



Special Thanks to Our Community Partners

